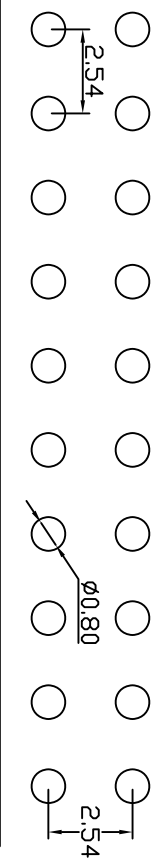
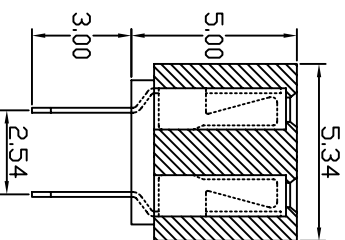
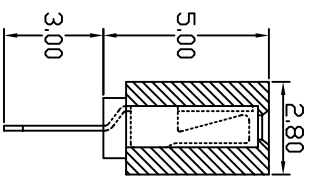
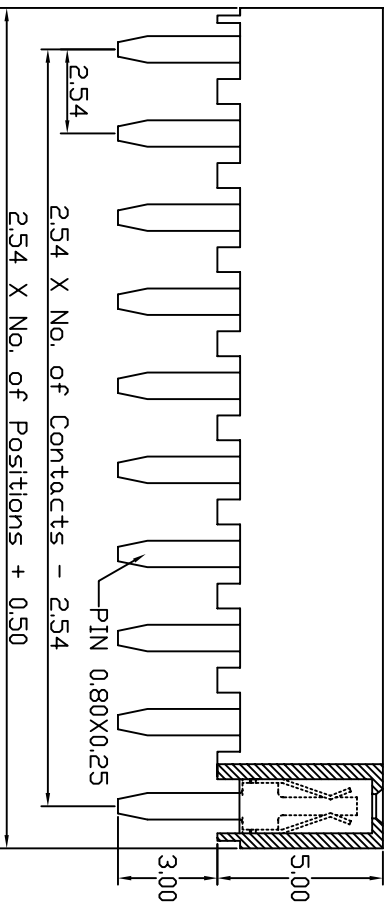
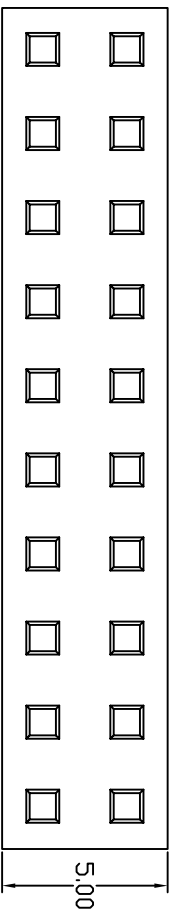


NO.	REV.	MODIFY NOTES	REVISED	DATE
1	A1	新版发行	Wanglong	09.02.18



PCB LAYOUT

SPECIFICATIONS

Current Rating : 3AMP

Operation Temperature : -40°C to +105°C

Contact Resistance : 20mΩ Max.

Insulation Resistance : 1000MΩ Min

Withstanding Voltage : AC 1000V

Insulator Material : Polyester (U194V-0)
Standard: Nylon-66

Contact Material : Phosphor Bronze

Contact Plating : Au or Sn Over 50 U"Ni

TOLERANCE:		NT 東莞市安拓電子有限公司 Dongguan Antuo Electronic Co., Ltd	地址: 廣東省東莞市長安鎮銅湖第一工業區 電話: 40769-82716236 傳真: 40769-82716087	
X.	±XXX		2.54mm Female Header, Single/Dual Row, Straight	
.X	±0.20		TITLE: DWG NO. AT-09020095 THIRD ANGLE PROJECTION	
.XX	±0.10		ANG.	

SIGNATURE		DATE		CODE NO.	JW00
Wanglong		2009.02.18		CUS. NO.	
Devil		2009.02.18		SCALE	None
Summer		2009.02.18		UNIT	mm
APP.		PAGE		1/1	